

Arctic Live! 2016 Periscope guidance

During Arctic Live! 2016, Digital Explorer will be broadcasting live from Svalbard using an internet service called Periscope.

Periscope is an online tool which enables us to reach and interact with a huge online audience and bring the amazing frozen north to your classrooms. You'll be able to ask questions and have the team answer them without the need to book a specific time.

With Arctic Live! on Periscope, your class will be joining others from around the world in discovering the beautiful Arctic at the same time.

When is it?

Session 1 - UK

Tuesday 8th March 09:30 – 10:30 (GMT)

Session 2 - USA

Tuesday 8th March 12:00 – 13:00 (EST)
11:00 – 12:00 (CST)
10:00 – 11:00 (MST)
09:00 – 10:00 (PST)

Session 3 - UK

Wednesday 16th March 09:30 – 10:30 (GMT)

Session 4 - USA

Wednesday 16th March 12:00 – 13:00 (EDT)
11:00 – 12:00 (CDT)
10:00 – 11:00 (MDT)
09:00 – 10:00 (PDT)

1. How do I view the broadcast?

1. Simply visit the Digital Explorer Twitter page at the time best suited for your class [here](http://bit.ly/TwitD_E) (http://bit.ly/TwitD_E)
2. At the very top of our Twitter page, you'll find a tweet saying that we are 'LIVE on #Periscope' (like the image on the right).
3. Click on the grey box and you'll be taken to our full screen live broadcast.
4. We recommend playing this broadcast full screen on your interactive whiteboard, and sound through your speakers.

What technology do I need?

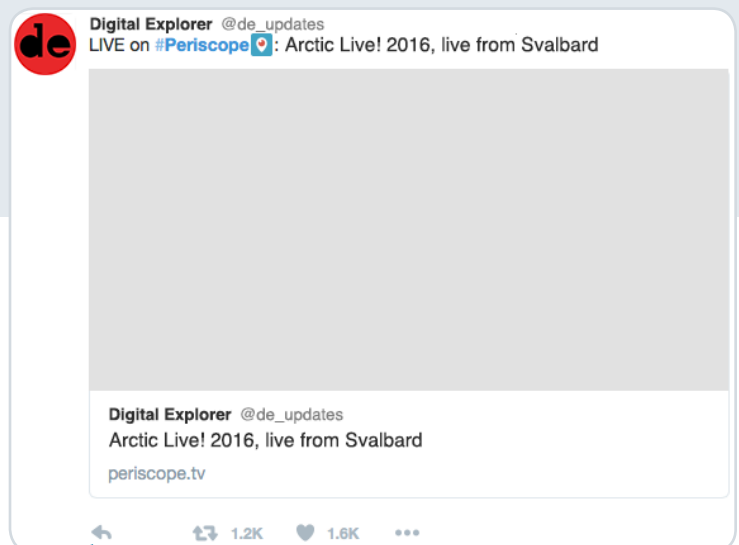
- Computer
- Internet
- Interactive whiteboard
- Speakers

2. How do I ask a question?



via Twitter

1. You'll need a Twitter account to ask questions during the call, You can sign up for one here: [sign up](http://bit.ly/TW_SU) (http://bit.ly/TW_SU)
2. We recommend using a secondary device (like a smartphone, tablet or second computer) and tweet questions directly to the Digital Explorer Twitter page [here](http://bit.ly/TwitD_E) (http://bit.ly/TwitD_E)
3. Tweet your questions by 'replying' to the Digital Explorer Periscope tweet.
4. You'll be able to type your question in the pop-up window and tweet.
5. Ask as many questions as you want!



@de_updates How many miles have you travelled so far?

Media Location Poll

87

Tweet

Arctic Live! 2016 Periscope guidance (continued)




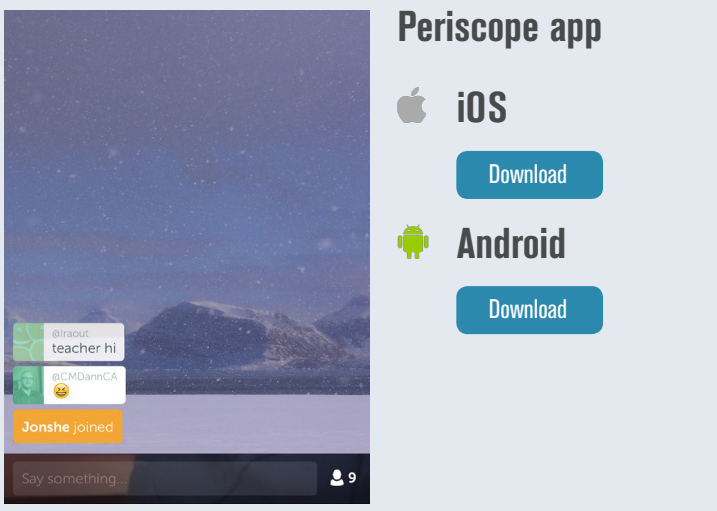
via the Periscope app

1. The Periscope app is available for both Apple iOS devices and Android. Download your required version from the links on the right.
2. Launch the app.
3. Find Digital Explorer by tapping on the 'people' tab and searching for 'Digital Explorer'.



the people tab icon.

4. When we're broadcasting, you'll be able to watch live by tapping the event on our profile.
5. Just below the broadcast you'll see a text box where you can ask your questions, which will appear on our screen in the Arctic! 
6. We recommend muting the broadcast on your device, so it doesn't interfere with the broadcast on your whiteboard.



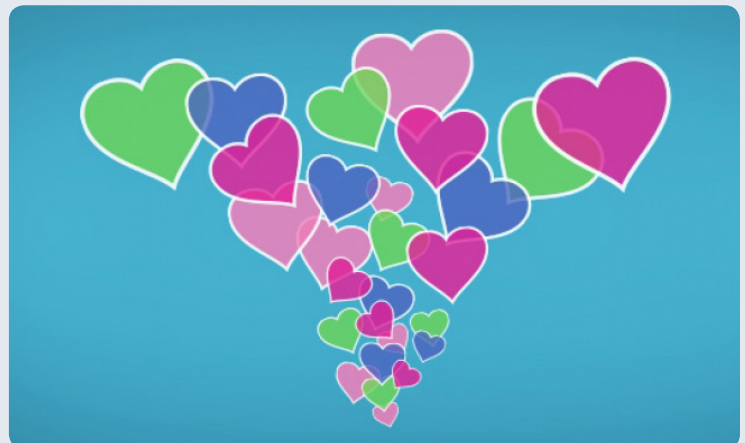
Periscope app

iOS
[Download](#)

Android
[Download](#)

3. How do I send ❤️?

1. When watching the broadcast, you may notice flurries of love hearts occasionally come into view - this means people like what they're seeing!
2. You can only send Digital Explorer ❤️s from the Periscope app.
3. When watching the broadcast in the app, tap on the screen to send us ❤️s.
4. We're rather keen on ❤️s, so send us as many as you want!



4. I need question inspiration!

Fear not, we've created some handy resources to help your class formulate some really interesting questions that Google can't answer.

You can download the resources for free [here](#)



What do you think the Arctic will look like in the future?



What do you miss most about home?



How do the toilets work in the Arctic?

5. I'm confused!

No problem, please email your questions to info@digitalexplorer.com and we'll help!

To:	<input type="text" value="info@digitalexplorer.com"/>
Cc:	<input type="text"/>
Bcc:	<input type="text"/>
Subject:	<input type="text" value="I have Arctic Live! Periscope questions"/>